

# INSTALLATION MANUAL



## VC75 STEREO VOLUME CONTROL

Attenuator type:	Tapped auto transformer.
Switch:	12 position rotary, make-before-break contacts, low torque specifications for smooth feel.
Connector:	Screw-tight type, non-removable.
Input Power Rating:	UL Listed @ 25 Watts RMS continuous, 35 Hz-20 KHz.
Core Saturation:	Studies reveal that core saturation @ 35Hz is 25W.
Frequency Response:	+0, -1 dB worst case (-6 dB tap), +0, -0.2 dB all other taps, 35 Hz-20 KHz. Measured at full power, 8 Ohm load. Most controls better these specifications.
Transformers:	Tri-filar wound for flat response and minimum phase shift, grain-oriented, high silicon steel laminations.
Attenuation:	-34 dB in 12 steps, 8 steps @ -3 dB each, 1 step @ 4 dB, 1 step @ -6 dB, last step OFF.
Mounting:	Fits in most standard single electrical junction boxes, depth less than 2 1/4".



### INSTALLATION:

Installation must be made by qualified service personnel, and must meet all local codes.

Before starting connections, please note that the left and right attenuator circuits are completely isolated from each other to prevent instability when used with certain types of amplifiers which have floating grounds. If the amplifier to be used has common grounds between channels, a 3 wire system can be used between the amplifier and control, but it will be necessary to connect a jumper between the control ground returns (L- & R-). If one ground is open, there will be no output on the ungrounded channel at any attenuator setting.

The connectors on the attenuator are the screw-to-tighten type. See the diagram on the back of this instruction sheet.

1. Make connections by stripping wire insulation back about 3/16". Twist any loose strands tightly.
2. Insert the wires from the amplifier into the INPUT openings of the connector, hot to hot and ground to ground, then tighten screws. Check for stray wire strands that might cause a short circuit. Make sure the metal part of the screw connector engages the bare wire, NOT the insulation!
3. Similarly, connect speaker wires to the control OUTPUT openings and tighten screws.
4. Install control in its operating location. Suggestion: Leave control 3 or 4 positions CCW from maximum before firing-up the system for the first time to avoid "blasting" the speakers, while still having enough sound to observe operation.

## WARRANTY

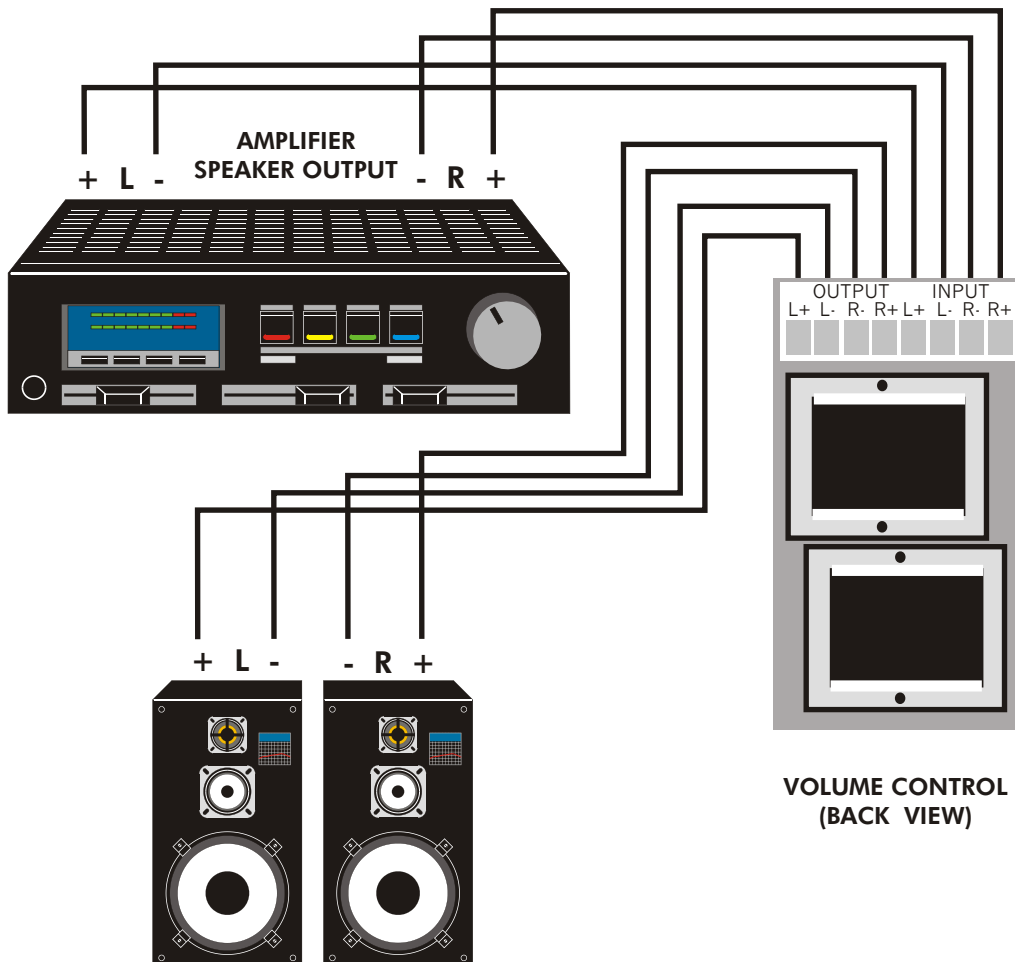
Your AUDIOPLEX TECHNOLOGY® Stereo Speaker Volume Control is covered by a LIFETIME warranty against any defects in workmanship and materials. Any defects will be remedied without charge for labor or parts.

Damage incurred by shipping or accident is not considered to be a defect, and not covered by this warranty. AUDIOPLEX TECHNOLOGY,® is not responsible for defective operation caused by abuse or by modification or service by any unauthorized person or agency.

The product must be properly installed and operated according to instructions for the warranty to apply. Any necessary servicing must be done by AUDIOPLEX TECHNOLOGY.® The product must be returned expenses prepaid, with written authorization from the company. The product must be shipped with the proof of purchase and in the original carton and packing material to avoid damage.

This warranty gives you specific legal rights. You may have other rights which vary from state to state.

### WIRING DIAGRAM



© 1999 - 4/20/99

## AUDIOPLEX TECHNOLOGY®

404 GWH P.O. BOX 440  
MELVIN VILLAGE, N.H. 03850  
1-800-257-2077 1-603-544-8601 FAX: 1-603-544-8901  
E-MAIL: sales@audioplex.com

# INSTALLATION MANUAL



## VC75 MONO VOLUME CONTROL

Attenuator type:	Tapped auto transformer.
Switch:	12 position rotary, make-before break contacts, low torque specifications for smooth feel.
Connector:	Screw-tight type, removable.
Input Power Rating:	25 Watts RMS continuous, 35Hz-20KHz, 75 Watts audio.
Core Saturation:	Studies reveal that core saturation @ 35 Hz is 25 W.
Transformer:	Tri-filar wound for flat response and minimum phase shift, grain oriented, -34 dB in 12 steps, 8 steps @ -3 dB each, 1 step @ 4 dB, 1 step @ -6 dB, last step OFF.
Mounting:	Fits most single gang junction boxes.

## **INSTALLATION**

Installation must be made by qualified service personnel, and must meet all local codes.

Wiring the system is done identically to the manner of hooking up standard attenuators. The controls are installed ONE PER SPEAKER and in parallel. Wiring may be such that one wire pair from the amplifier feeds the system with each control connected like lamp sockets in a 120 volt AC house wiring system. Another common approach is the "home run", where the wires from each control are individually brought to the amplifier, or a junction box, and then to the amplifier. Either method works well, although line losses may be slightly less with the "home run" system. DO NOT CONNECT CONTROLS IN SERIES! They will not operate properly.

1. Make connections by stripping wire insulation back about 3/16". Twist any loose strands tightly.
2. Insert the wires from the amplifier into the INPUT openings of the connector, hot to hot and ground to ground, then tighten screws. Check for stray wire strands that might cause a short circuit. Make sure the metal part of the screw connector engages the bare wire, NOT the insulation!
3. Similarly, connect speaker wires to the control OUTPUT openings and tighten screws.
4. Install control in its operating location. Suggestion: Leave control 3 or 4 positions CCW from maximum before firing-up the system for the first time to avoid "blasting" the speakers, while still having enough sound to observe operation.

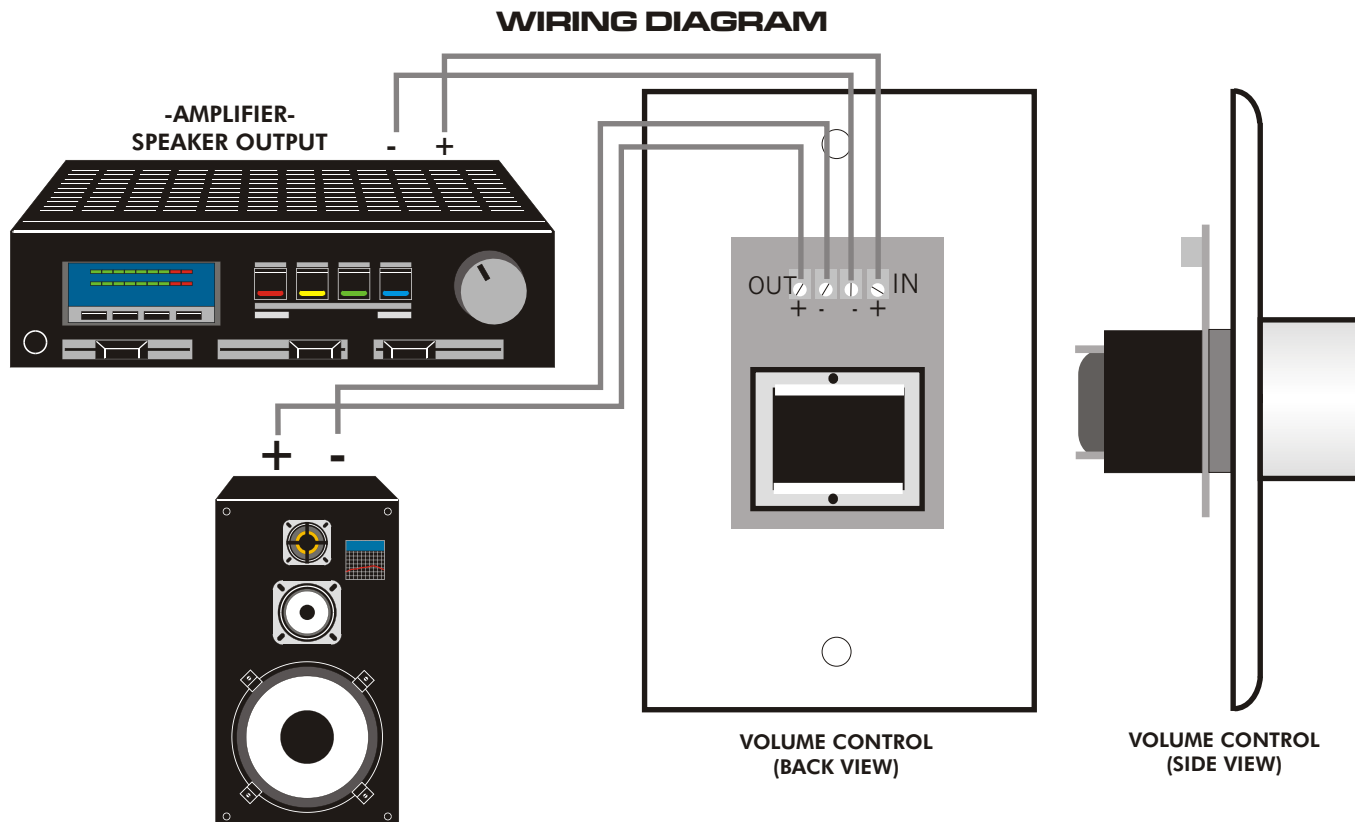
## WARRANTY

Your AUDIOPLEX TECHNOLOGY® Mono Speaker Volume Control is covered by a LIFETIME warranty against any defects in workmanship and materials. Any defects will be remedied without charge for labor or parts.

Damage incurred by shipping or accident is not considered to be a defect, and not covered by this warranty. AUDIOPLEX TECHNOLOGY® is not responsible for defective operation caused by abuse or by modification or service by any unauthorized person or agency.

The unit must be properly installed and operated according to instructions for the warranty to apply. Any necessary servicing must be done by AUDIOPLEX TECHNOLOGY®. The product must be returned expenses prepaid, with written authorization from the company. The product must be shipped with the proof of purchase and in the original carton and packing material to avoid damage.

This warranty gives you specific legal rights. You may have other rights which vary from state to state.



© 1999 - 4/20/99

**AUDIOPLEX TECHNOLOGY®**  
404 GWH, P.O. BOX 440  
MELVIN VILLAGE, N.H. 03850  
1-800-257-2077 IN N.H. 1-603-544-8601  
FAX: 1-603-544-8901  
E-MAIL: sales@audioplex.com